

TECHNICAL DESCRIPTION

Clipper
PROFILS pour CLOISONS

ELANCE RANGE



Glass doors in included frame
for ELANCE partition
double or single glazing

1/1

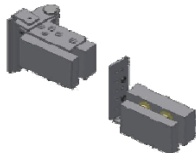
01/09/16

CLIPPER brand, ELANCE range

- Transparent toughened glass doors, 12 mm thick.
- Standard equipment on opening elements with Clarit lock and key cylinder ref. CLIPPER 6-870, brushed aluminium finish.
- Standard equipment on semi-fixed system with repeater strike plate + top and bottom locks ref. CLIPPER 6-875, brushed aluminium finish.



Door mounted on frame with pivot kit with stainless steel finish on opening and semi-fixed glass pane ref. CLIPPER 4-870.



Framework and frame available in the three standard CLIPPER colours:

- White 910 (RAL 9010).
- Graphite.
- Anodised natural.

Or to order from the RAL palette.

Single-leaf widths available:

- 830 mm standard width
- 930 mm standard width
- Custom width up to 1030 mm

2040 mm standard door height.

